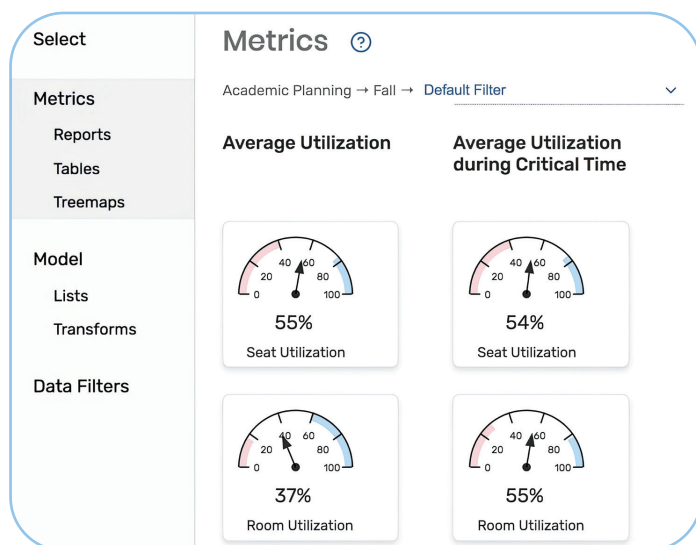


Campus Master Planning and Analytics



Understand Your Scheduling Effectiveness

The X25® web-based analytic tool provides the data you need—in clear, colorful graphical reports—to identify inefficiencies in space and equipment allocation, set improved policies, and justify construction, closure, or renovation. X25's dashboard navigation lets you focus on the metrics that matter most. Drill down to explore and reveal space relationships on campus. Specify and generate the reports to support your master planning and campus vision.

X25 • Benefits



Graphical Reporting

- Create clear, understandable graphical reports to pinpoint patterns, spot problems and identify missed opportunities
- Modify the parameters and scope of each report as needed
- Generate reports on supply/demand for IT and other changing resources
- Supply data to support scheduling decisions and reports required by your state or trustees



Comparative Analytics

- Evaluate how effectively your inventory meets the demands of faculty and class load
- View and compare results for critical periods, such as drop/add date; end-of-term, and census date
- Use dashboard functions to view and compare your reports
- Compare levels of demand among venues to identify where new facilities are needed



Modeling

- Perform simulated changes to your existing X25 data and examine the utilization patterns and other effects of those changes
- Use *Real-Time Benchmarking*® to clearly identify trends that will help with future planning
- Ensure you are meeting accountability standards set by your institution and position your institution to obtain future funding

Find out more!

Visit collegenet.com or contact us at 503.973.5200 or at sales@collegenet.com

collegenet.com